

eir



Nova

Chic and minimal, eir's Nova fire table reimagines the al fresco fire as a refined centre point for modern outdoor living.

Technical Specifications

DIMENSIONS	34" (Width) x 17" (Height)	
FUEL TYPE	Natural Gas or Liquid Propane	
IGNITION TYPE	Match Lit or Electronic	
WEIGHT	70lbs	
BTU / HOUR	65,000 BTU	
BURNER MATERIAL	304 Stainless Steel	
WARRANTY	Residential	Commercial
Burner & Pan	Lifetime	Lifetime
Electronics	3 years	1 year
Pilots	2 years	1 year
Copper Fire Pits	3 years	3 years
CERTIFICATION	CSA	

Included Items: Assembled Stainless Burner Pan, Stainless Burner, & Stainless Flex Line

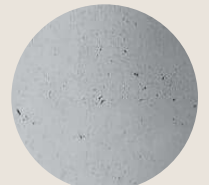
Colours



TALC



DUNE



ASH

Fire Stones



SLATE BLACK



OFF WHITE

eir

eir fire tables come in three organic colours enhanced by your choice of natural stones, and may be outfitted with an optional tempered glass wind guard. A powder-coated aluminum top (sold separately) transforms the square fire source into a contemporary styled table for all-day and all-season use.

info@eirhome.com

1-833-236-3686